



CARE INSTRUCTIONS

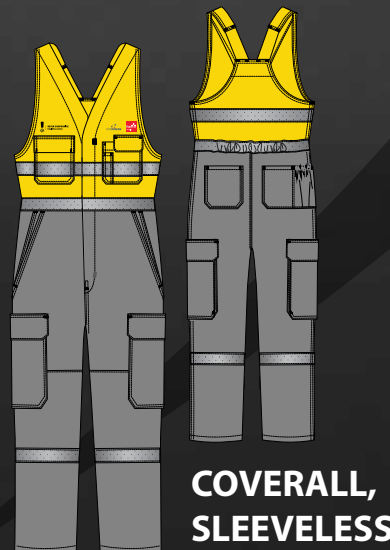
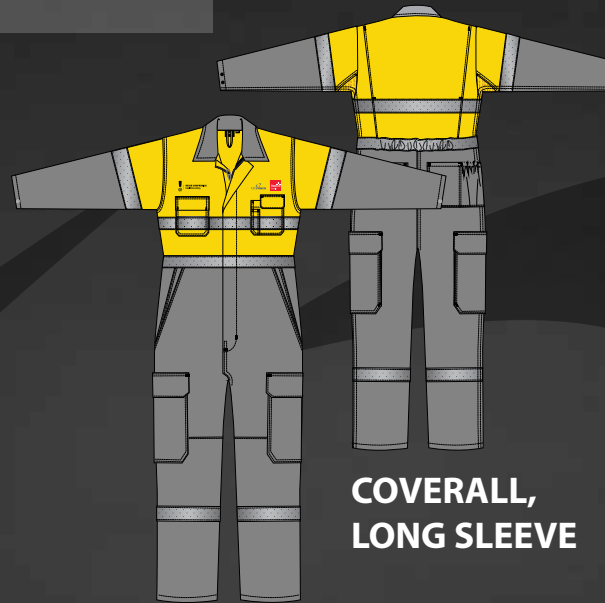
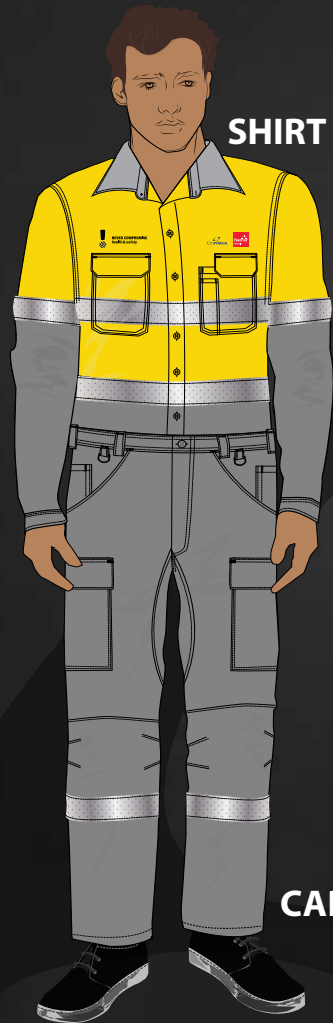
PERSONAL PROTECTIVE APPAREL



SHIRTS, CARGO TROUSERS, COVERALLS

GARMENT DETAILS:

- Inherently flame retardant
- Light-weight fabric
- Excellent breathability and wearer comfort
- Compliant to AS/NZS 4602.1:2011 Class DN: day or night use
- Compliant to ASTM-F1959 CAT 2



Warm wash



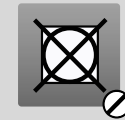
Do not bleach



Line dry



Dry in shade



Do not
tumble dry



Cool iron
using press cloth



Do not iron
reflective tape



Do not
dry clean

WASH BEFORE WEAR

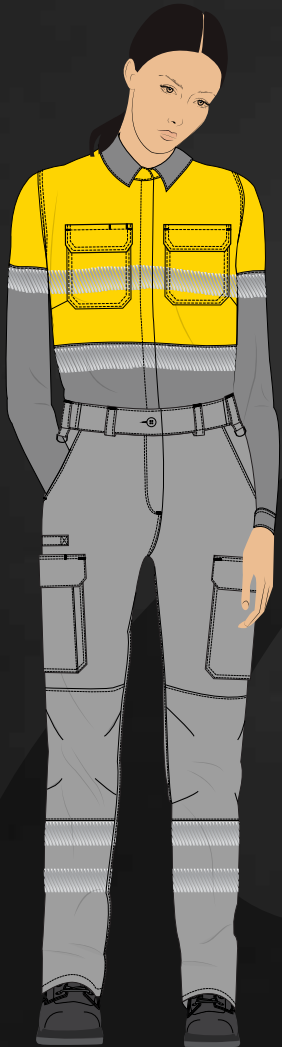
* NOTE: Launder separately from non FR garments
and close all fastenings before laundering

* WARNING: Failure to launder properly could adversely
affect the flame resistance of the fabric

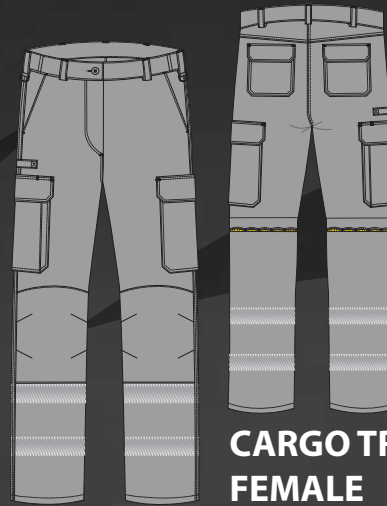
CARGO TROUSERS

GARMENT DETAILS:

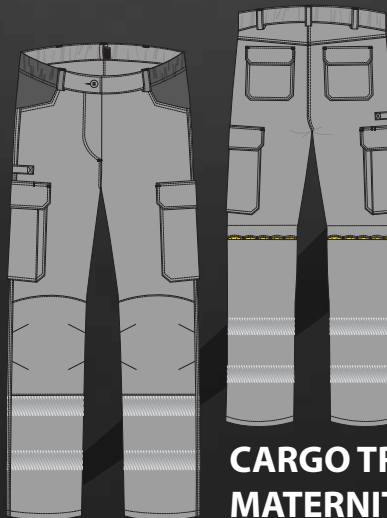
- Flame retardant
- Light-weight fabric
- Excellent breathability and wearer comfort
- Compliant to ASTM-F1959 CAT 1



CARGO TROUSER



CARGO TROUSER,
FEMALE



CARGO TROUSER,
MATERNITY



Warm wash
Do not soak



Do not bleach



Do not use
fabric softener



Do not use
soap



Line dry



Dry in shade



Warm iron



Do not iron
reflective tape



Do not
dry clean

WASH BEFORE WEAR

* NOTE: Launder separately from non FR garments
and close all fastenings before laundering

* WARNING: Failure to launder properly could adversely
affect the flame resistance of the fabric

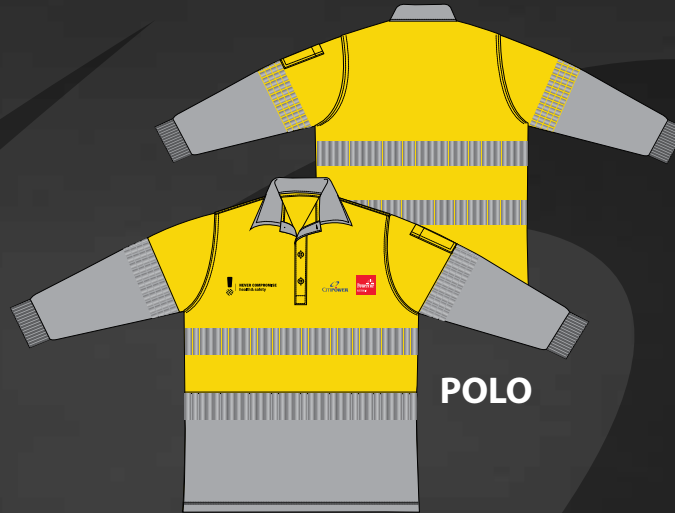
POLO, WINDCHEATER, FLEECE VEST

GARMENT DETAILS:

- Inherently flame retardant
- Excellent breathability and wearer comfort
- Segmented reflective tape for improved garment stretch
- Compliant to AS/NZS 4602.1:2011 Class DN: day or night use
- Compliant to ASTM-F1959 CAT 2



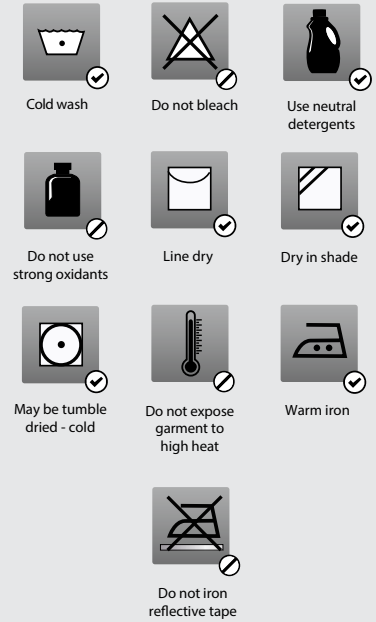
WINDCHEATER



POLO



VEST



WINDCHEATER + VEST



POLO

WASH BEFORE WEAR

* NOTE: Launder separately from non FR garments and close all fastenings before laundering.

*Do not overload washing machine.

*Do not wash in hard water.

*Normal spin and remove immediately after spin.

* WARNING: Failure to launder properly could adversely affect the flame resistance of the fabric

RAINWEAR

GARMENT DETAILS:

- Fully seam sealed, 100% waterproof
- Windproof
- Highly breathable
- Inherently flame retardant
- Fluorocarbon finish on outer shell
- Compliant to AS/NZS 4602.1:2011 Class DN: day or night use

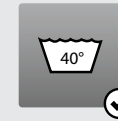


JACKET



VEST

TROUSER



Warm wash



Do not bleach



Dry in shade



Do not
tumble dry



Cool iron
using press cloth



Do not iron
reflective tape



Do not
dry clean

WASH BEFORE WEAR

* NOTE: Launder separately from non FR garments
and close all fastenings before laundering

* WARNING: Failure to launder properly could adversely
affect the flame resistance of the fabric



AUSTRALIAN DEFENCE APPAREL
1 EQUATOR ROAD
THOMASTOWN 3074
VICTORIA, AUSTRALIA

www.ada.com.au

T: 1800 010 200

E: infopowercor@ada.com.au